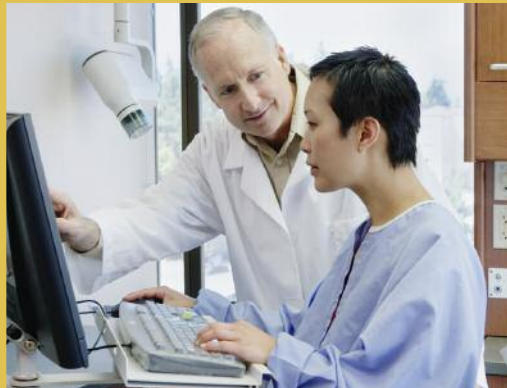


ACADEMY OF OSSEOINTEGRATION



Membership Application



Advancing the Vision of Implant Dentistry

INTRODUCTION

The Academy of Osseointegration is recognized as the premier association for professionals interested in implant dentistry. It has always been at the forefront of scientific advances in dental implant and tissue replacement therapy. Because its membership is international with members from more than 70 countries, AO offers the unique advantage of sharing information on a worldwide basis. The organization fosters the dissemination of knowledge to all disciplines and promotes developments in tissue replacement therapies in oral and facial care. The multidisciplinary make-up of the membership encourages dental professionals from all the specialties, general practitioners, research scientists, academicians, laboratory technicians and other ancillary personnel to come together in a learning experience that provides a refreshing opportunity for an interdisciplinary approach.

HISTORICAL BACKGROUND

Following the introduction of osseointegration in North America in 1982, a group of dental clinicians from New York participated in a course entitled, "Osseointegration in Clinical Dentistry." Subsequently, the group formed a study club to share research and information. This local study club eventually concluded that a national organization was essential to foster education and advancement in this field. As a result, the Academy of Osseointegration was formed.

The first Annual Meeting of the Academy of Osseointegration was held in April, 1986, in Chicago, Illinois. A pro-tem Executive Board was elected to include representatives from oral surgery, periodontics, prosthodontics and general practice.

HONORARY FELLOWS

In recognition of their outstanding research and clinical investigations, Doctors Per-Ingvar Brånemark, Harold Slavkin, Andre Schroeder, Willi Schulte and George Zarb have been named Honorary Fellows of the Academy. Their pioneering scientific efforts in the field have been influential in the evolution of the science of osseointegration

BENEFITS OF MEMBERSHIP

- Subscription to the Academy's official journal, the International Journal of Oral and Maxillofacial Implants (JOMI)*
- Subscriptions to *Academy News* and *Academy e-News* the Academy's member newsletters*
- Significantly reduced registration fees for the Academy's Annual Meeting
- Personalized membership certificate suitable for displaying in your office
- Access to the Academy's Dental Implant Forum Website
- Continuing education opportunities such as regional meetings, CD-ROM's and the Academy's Website
- Periodic mailings with meeting information, membership updates and new issues of patient education handbooks
- Annual Membership Directory containing contact information on all members
- Being a member of the largest networking body of implant dentistry in the world
- Access to the "Members-Only" section of the Academy's Website

*Not included in Affiliate Membership

MEMBERSHIP CATEGORIES

Active: This category is open to any dentist, physician or other basic scientist in implant dentistry.

Affiliate: Includes certified dental technicians, nurses, auxiliary personnel and technical representatives of manufacturing companies who have an interest in implant dentistry. *Affiliate membership does not include subscription to JOMI or Academy News.*

Student: This category is open to any student or resident enrolled in dental school, medical school, pre-doctoral or post-doctoral advanced education programs.

Fellow: The Board of Directors may confer Fellowship status upon any Active Member who qualifies by service to the Academy. Individuals may not enter the Academy as a Fellow.

The Membership and Awards Committee review membership applications throughout the year. Membership is contingent upon approval by the AO Board of Directors.

EDUCATION

Dental School	Dates	Degree
Post-Graduate Clinical Training (School)	Dates	Degree/Certified
Graduate School Advanced Degree	Dates	Degree
If you are currently a student, when will you graduate?	Month	Year

COMPLETE ALL THAT APPLY

I was referred to the Academy by: _____

- I am interested in volunteering for a committee.
- Affiliate Members **ONLY**: I would would not like to receive a subscription to *JOMI* and *AO News* for an additional \$55/year.

Date Signature of Applicant

PLEASE NOTE: AN UNSIGNED APPLICATION WILL NOT BE PROCESSED.

HAVE YOU ENCLOSED THE FOLLOWING?

AN INCOMPLETE APPLICATION WILL NOT BE PROCESSED

- A Completed Application Form
- Payment **Active:**
\$355 (\$255 + \$100 application fee)
Outside North America \$395 (\$255 + \$100 Application fee + \$40 Air Mail Charge)
Affiliate:
\$200 (No application fee) Please add \$55 for 1-year subscription to *JOMI* and *AO News*.
Outside North America \$240 (\$200 + \$40 Air Mail Charge). Please add \$55 for 1-year subscription to *JOMI* and *AO News*.
Student:
\$75 (no application fee)
Outside North America \$115 (\$75 + \$40 Air Mail Charge)
- Active Membership:** A photocopy of your specialty certificate, diploma or board certification
- Student Membership:** A letter from your program director on official letterhead indicating anticipated date of graduation.

PAYMENT METHOD

Payment is accepted via check drawn on a U.S. bank, Visa, MasterCard or American Express

- CHECK ENCLOSED VISA MASTERCARD AMERICAN EXPRESS

Card Number Expiration Date

Name (as it appears on the card)

Authorized Signature